



CREATIVWIRTSCHAFT.AT

Martin Hollinetz
Chairman
Open Technology Labs
Upper Austria



Open Technology Labs

Open and free space for free and creative thinking people!

Background - Region



- Villages and small towns (1500 - 20000 inhabitants)
- Touristic Area (Salzkammergut), Linz and Salzburg are the nearest Cities (50 km distance)
- High density of trade and industry, and additional agriculture and tourism.
- Many medium-sized businesses, a few large companies
- creative industries rudimentary

Background



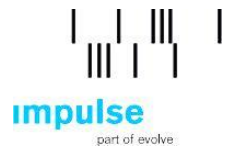
- Brain-drain and demographic change are main problems
- Lack of structures to support creative potential in the rural areas
- Citizens are encouraged to actively implement their desired lifestyle in the rural area instead of moving to the cities.
- **Regional goals:**
 - OTELO applies a bottom-up approach, creating a framework, which fosters people's creativity and entrepreneurship
 - involve people between 5 and 80 years of age
 - new perspectives for young creative and prevent economic emigration

OTELO How to

provide a successful framework for experimental and creative projects



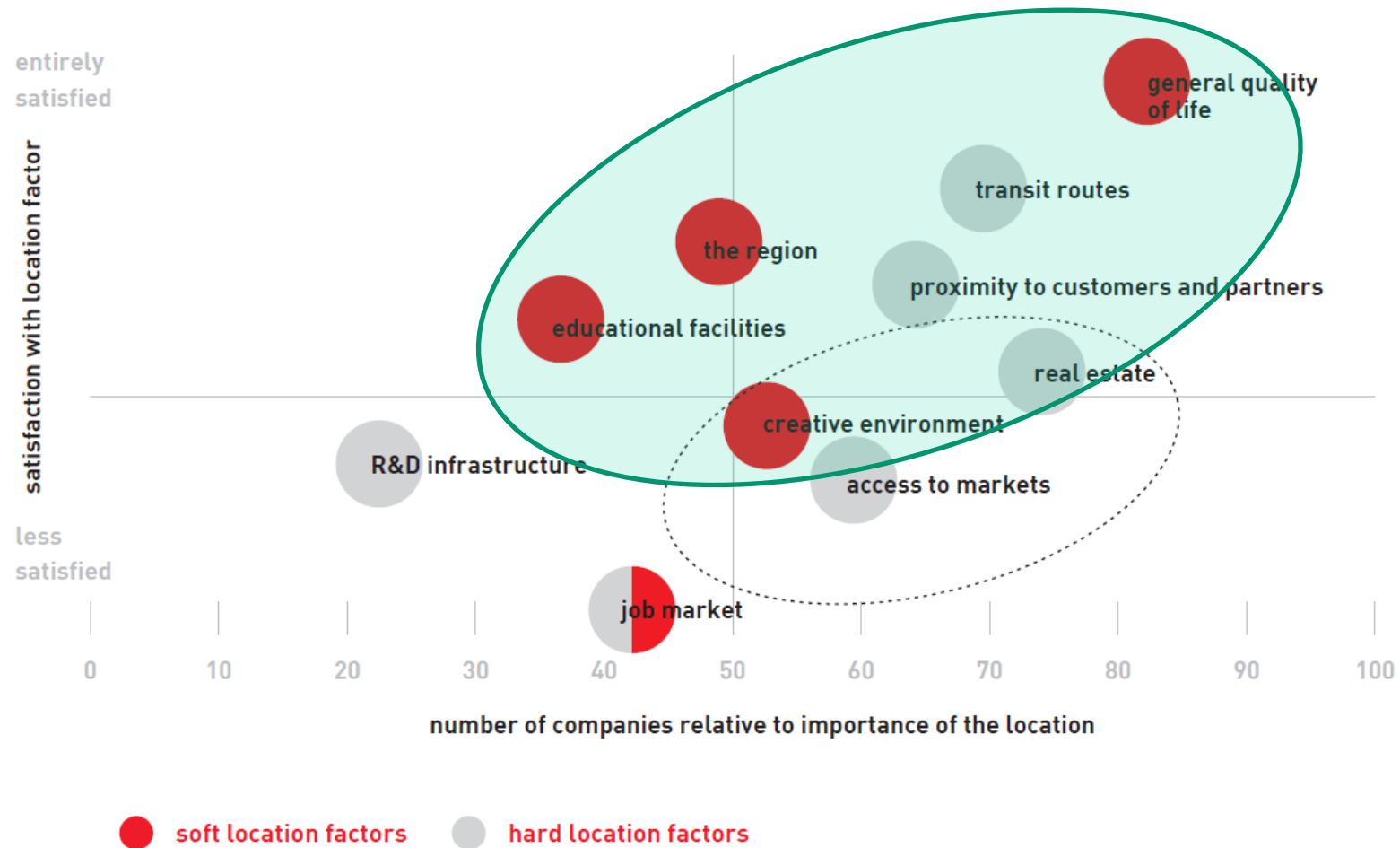
- Otelogo founded 2010 and followed 4 approaches:
 - Use of regional infrastructure
 - Easy access, low threshold
 - Providing a framework of cooperation and networking
 - Supporting new regional working models



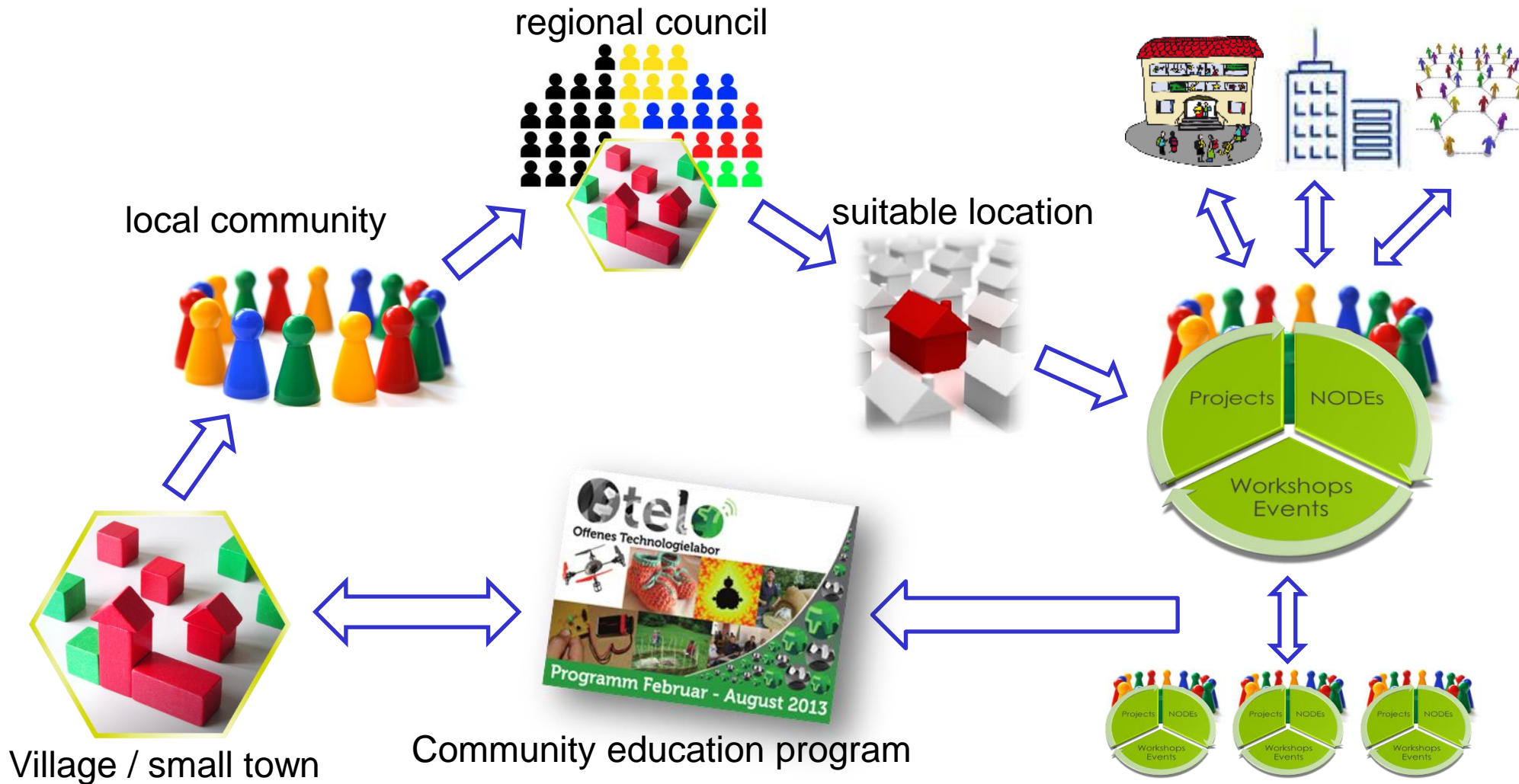
Community, belonging, cooperation, solidarity, strive for balance, share, release, exchange, free space, effectively regionally, lust and pleasure, printing out - pure pleasure

*Think, show cross-thinking alternatives, experimentation, development, self-empowerment, creative Shaping, openness, independence, dignity, transparency, self-reflection
(key-words, OTELO-Charta)*

OTELO focus



Starting OTELO



Organizational support of OTELO



Developing
and trying
out ideas

Realizing
individual
projects,
step by step

Regional interaction of OTELO



Important
contribution to
regional
development



Nodes activities,
Workshops,
lectures,
discussions,
projects, startups

OTELO Nodes



NODES are a mix
between network
and node

NODES are spaces
where ideas are
developed and
implemented

NODES have
different phases
with different
support by OTELO

OTELO successes



- From **2 to 6 Locations in two years** with more than 250 people involved, more than 10,000 participants in our events 2012! 4 ongoing project
- **3 spin-off startups** from OTELO activities (3D-Printing, science communication and exhibition design)
- **New collaborations** with partners from industry, regional development and research (Andritz AG, MIBA, Lenzing AG, OMV, Baker & McKenzie, Ashoka, Creative Region,...)
- **Nominated** for the sea-award 2013, and for the National Award for the commitment to electric vehicles
- **Awarded** for the international "Sozial-Marie" prize 2013" and for the development of a "OggStreamer" in the "Xport Pro Design Contest" in the U.S., Silicon Valley (\$ 3,000)



OTELO goals 2014/2015

- 3-5 locations in Germany (Brandenburg)
- Another 10 locations in Austria
- Support for another 10 Start-ups
- Starting the otelo Cooperative with a new working model for young creatives

“Open and free space for free and creative thinking people”

